

### PLANT SCHEDULE

SYMBOL	COMMON NAME	BOTANICAL NAME	PLANTING SIZE
<b>SHRUBS</b>			
SYM	COMMON NAME	BOTANICAL NAME	PLANTING SIZE
○	Neon Flash Spirea	Spirea japonica 'Neon Flash'	3 gallon
○	Pygmy Ruby Barberry	Berberis thunbergii 'Meiland Pillar'	2 gallon
○	Blue Chip Juniper	Juniperus horizontalis 'Blue Chip'	2 gallon
⊛	Anthony Waterer Spirea	Spirea x bumalda 'Anthony Waterer'	2 gallon
○	Goldfinger Potentilla	Potentilla fruticosa 'Goldfinger'	5 gallon
○	Karl Foerster Feather Reed Grass	Calamagrostis x acutiflora 'Karl Foerster'	1 gallon
<b>GROUNDCOVERS</b>			
■	Sodded RTF Turf		

- ### GENERAL NOTES
- A. NOTIFY THE ARCHITECT OF AVAILABILITY OF SPECIFIED PLANT MATERIAL FROM COMMERCIAL NURSERIES. IF A SPECIFIED PLANT IS NOT AVAILABLE, THE ARCHITECT WILL PROVIDE ALTERNATE PLANT MATERIAL SELECTIONS.
  - B. VERIFY LOCATIONS OF ALL EXISTING UNDERGROUND UTILITY SYSTEMS PRIOR TO BEGINNING ANY PHASE OF CONSTRUCTION THAT MAY CAUSE DAMAGE TO SUCH SYSTEMS. REPAIR / REPLACE DAMAGED UTILITIES TO THE SATISFACTION OF THE OWNER OR GOVERNING AGENCY, AND AT NO ADDITIONAL COST TO THE OWNER OR INCREASE IN BID AMOUNT.
  - C. LANDSCAPE CONTRACTOR SHALL BE RESPONSIBLE FOR PREPARING ALL PLANTED AREAS. ALL DELETERIOUS MATERIAL, SUCH AS ROCK, TRASH, CONSTRUCTION DEBRIS, AGGREGATE BASE MATERIAL, ASPHALT, ETC., SHALL BE REMOVED PRIOR TO ANY FILL OPERATIONS. RIP SUB GRADE AS PER SPECIFICATIONS. FILL ALL PLANTING AREAS WITH CLEAN EARTHEN FILL, AS PER SPECIFICATIONS. SOIL SHALL BE FREE OF HEAVY, STIFF CLAY AND ANY DELETERIOUS MATERIAL OVER ONE INCH IN SIZE. THE TOP SIX INCHES OF FILL MATERIAL SHALL BE TOPSOIL, EQUAL TO THAT REQUIRED IN THE SPECIFICATIONS. CLEAN TOPSOIL STRIPPED FROM SITE MAY BE UTILIZED FOR PLANTER OR TOPSOIL FILL, IF PRIOR APPROVAL HAS BEEN OBTAINED FROM THE ARCHITECT.
  - D. EXCAVATED PLANT PITS SHALL HAVE POSITIVE DRAINAGE. PLANT PITS (WHEN FULLY FLOODED WITH WATER) SHALL DRAIN WITHIN 1 HOUR OF FILLING. ENSURE THAT ALL PLANT PITS HAVE POSITIVE DRAINAGE.
  - E. PROVIDE REQUIRED SOIL EROSION CONTROL MEASURES THROUGHOUT THE DURATION OF THE CONTRACT PERIOD. SHOULD THERE BE EXISTING SOIL EROSION CONDITIONS THAT REQUIRE MITIGATION, NOTIFY THE ARCHITECT IMMEDIATELY.
  - F. ALL PLANTER BEDS SHALL RECEIVE A 3" DEEP LAYER OF PINE BARK MULCH 1"-1.5" IN SIZE, DARK IN COLOR.
  - G. TOPSOIL DEPTHS SHALL BE AS FOLLOWS (WHERE APPLICABLE): LAWN AREAS-6" MIN.; PLANTER BEDS - 12" MIN.; CURB ISLANDS - 18" MIN.
  - H. ALL PLANTING BEDS SHALL BE TREATED WITH A PRE-EMERGENT HERBICIDE. PRE-EMERGENT HERBICIDE SHALL BE APPLIED PER MANUFACTURER'S RECOMMENDATIONS AND SHALL OCCUR AFTER TOPSOIL PLACEMENT AND PRIOR TO INSTALLATION OF PLANT MATERIALS AND MULCH.
  - I. CONTRACTOR IS RESPONSIBLE TO VERIFY ALL QUANTITIES PROVIDED ON ALL PLANS. IF QUANTITIES LISTED DO NOT CORRELATE WITH WHAT IS SHOWN ON THE PLAN, THE QUANTITIES SHOWN ON THE PLAN SHALL CONTROL. THIS INCLUDES BUT IS NOT LIMITED TO TREE, SHRUB, ROCK, TOPSOIL, MULCH, SEED OR SOO, EDGING, AND DRP LINE QUANTITIES.

- ### SHEET NOTES:
1. CONCRETE PLANTERS. RE: CIVIL DRAWINGS.
  2. REPAIR AND REPLACE LANDSCAPE AREAS DAMAGED AS RESULT OF NEW CONSTRUCTION. REPLACEMENT INCLUDES, BUT NOT LIMITED TO, TOPSOIL, FINE GRADING, SODDED LAWN, SHRUBS, EDGING, ETC.

**1 LANDSCAPE PLAN**  
 SCALE: 1" = 20'  
 0 10 20 40 60 80  
 SCALE IN FEET

**427 Shoshone St N Twin Falls, ID**

200 BROAD STREET  
 BOISE, ID 83702  
 (208) 343-4635  
<http://www.cshoa.com>

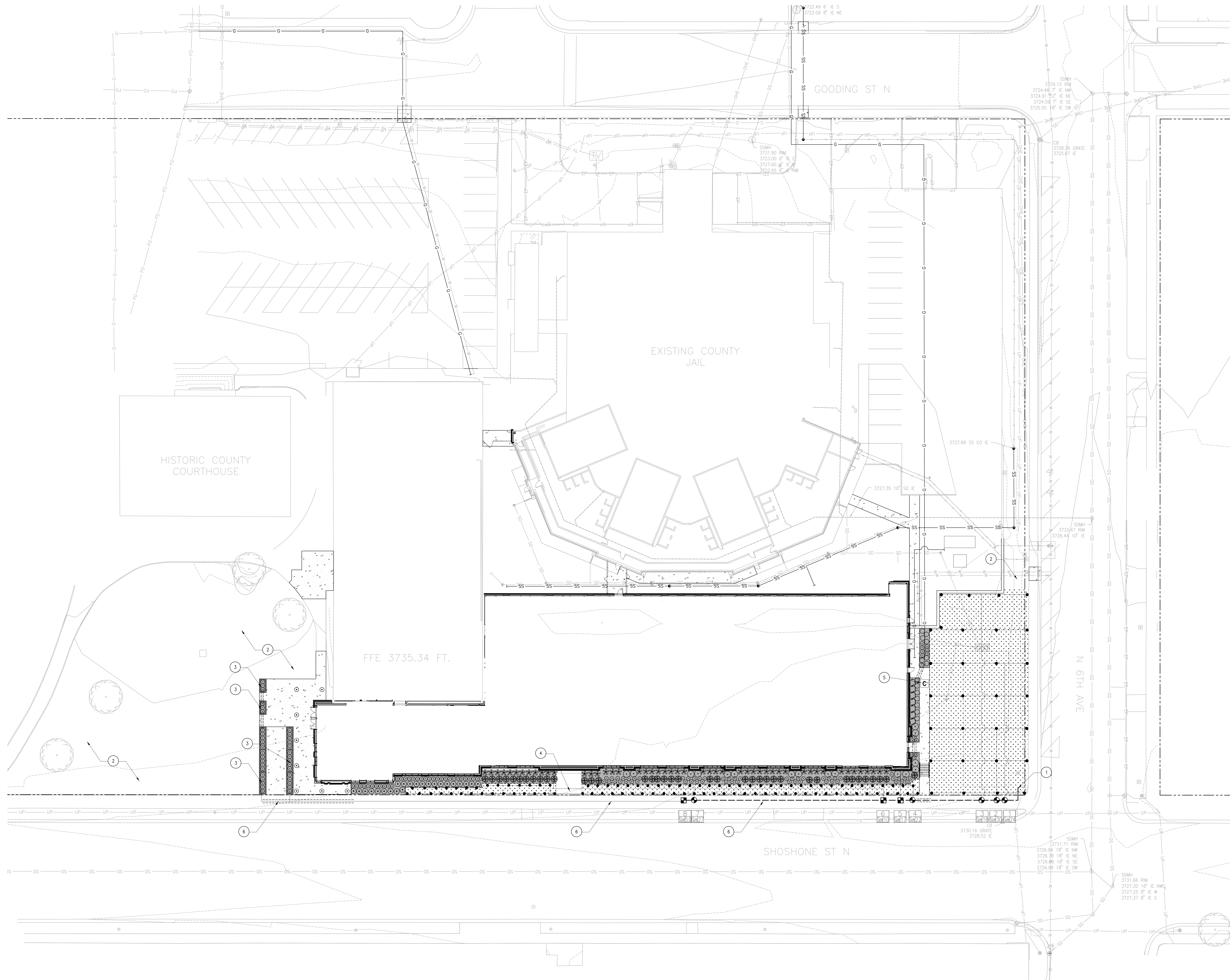
**CSHOA**

**AGENCY REVIEW SET**

PROJECT	DATE
21403.000	03-31-23
DRAWN	CHECKED
KDH	KDH
REVISED	

SHEET TITLE  
**LANDSCAPE PLAN**

SHEET  
**L10**  
 ORIGINAL SHEET SIZE  
 36" x 48"



### IRRIGATION LEGEND

SYMBOL	MANUFACT	MODEL	DESCRIPTION
	RAINBIRD	PESS SERIES	ELECTRIC REMOTE CONTROL VALVE SIZE PER VALVE SCHEDULE
	RAINBIRD	CONTROL ZONE KIT, FILTER, PRV, X02-PFB-100-00M (3-20 GPM)	
	RAINBIRD	XFS SUBSURFACE DRIPLINE	XFS-09-18 DRIPLINE AT 18" SPACING
	RAINBIRD	ESP-LX-NE UNMPPED	IRRIGATION CONTROLLER-PEDESTAL MOUNT IN LANDSCAPE AREA. RE ELECTRICAL PLANS, KEYNOTES.
	BUCKNER	VBV SERIES	ISOLATION VALVE-LINE SIZE
	BUCKNER	VBV SERIES - 3/4"	MANUAL DRAIN VALVE
	WILKINS	MODEL 950L	DOUBLE CHECK VALVE BACKFLOW PREVENTER. INSTALL PER LOCAL CODES AND CONDITIONS.
	PWPIPE (OR EQUAL)	PVC CLASS 200	2" MAINLINE
	PWPIPE (OR EQUAL)	PVC CLASS 200	LATERAL PIPE-WATER VELOCITY SHALL NOT EXCEED 5' PER SECOND
	PWPIPE (OR EQUAL)	PVC CLASS 200	4" SLEEVES OR 2 SIZES LARGER THAN PIPE. 2" FOR ELECTRIC VALVE WIRING
	RAINBIRD	330RC CC VALVE 33 DK VALVE KEY 5/8"-0 HOSE SWIVEL	QUICK COUPLING VALVE WITH ASSOCIATED VALVE KEY, AND HOSE SWIVEL

- ### GENERAL NOTES
- A. IRRIGATION SYSTEM HAS BEEN DESIGNED FOR 55 PSI. CONFIRM PSI AND GPM IS ADEQUATE PRIOR TO COMMENCING WORK. SHOULD THE PSI OR IRRIGATION SUPPLY NOT BE ADEQUATE, NOTIFY THE ARCHITECT IMMEDIATELY. IN THE EVENT THE ADEQUACY IS NOT REPORTED IN WRITING PRIOR TO THE START OF CONSTRUCTION, THE CONTRACTOR SHALL ASSUME FULL RESPONSIBILITY FOR ANY NECESSARY REVISIONS.
  - B. CONTRACTOR SHALL NOT INSTALL THE SPRINKLER SYSTEM AS SHOWN ON THE DRAWINGS WHEN IT IS OBSERVED IN THE FIELD THAT SITE CONDITIONS RENDER THE SPRINKLER SYSTEM FROM PERFORMING AS INTENDED. IN THE EVENT THAT THE ARCHITECT IS NOT NOTIFIED IN WRITING THAT SUCH CONDITIONS EXIST, THE CONTRACTOR SHALL ASSUME FULL RESPONSIBILITY FOR ANY REVISIONS AND REPAIR WORK NECESSARY.
  - C. DRAWINGS ARE CONCEPTUAL IN NATURE. ACTUAL PLACEMENT OF SPRAY HEADS, VALVES, LINES, ETC. WILL VARY. ALL PIPING, VALVES, ETC. SHOWN WITHIN PAVED AREAS ARE FOR DESIGN CLARIFICATION ONLY. INSTALL PIPING AND VALVES IN PLANTING AREAS WHERE POSSIBLE, AND LOCATE ELECTRIC CONTROL AND QUICK COUPLING VALVES IN GROUND COVER/SHRUB AREAS, 6" TO 12" AWAY FROM EDGE OF PAVEMENT FOR EASE OF ACCESS. CONTRACTOR IS RESPONSIBLE FOR INSTALLING A WORKING SYSTEM THAT MAINTAINS PROPER COVERAGE, EVEN IF MINOR ADJUSTMENTS ARE NECESSARY. NO IRRIGATION WATER TO BE SPRAY ON BUILDING WALLS, SIGNS, OR SIGNAGES.
  - D. 4" POP-UPS ARE TO BE USED IN ALL LAWN AREAS. 12" POP-UPS ARE TO BE USED IN ALL PLANTER BEDS. (WHERE APPLICABLE)
  - E. IF CIRCUIT PIPE SIZES ARE NOT SHOWN ON THE DRAWING, THE IRRIGATION CONTRACTOR IS RESPONSIBLE TO SIZE CIRCUIT PIPING. WATER VELOCITY IN ALL PIPES SHALL NOT EXCEED FIVE FEET PER SECOND. MINIMUM PIPE SIZE TO BE 1". POLYETHYLENE PIPE SHALL NOT BE USED.
  - F. CONTRACTOR IS RESPONSIBLE FOR INSTALLING SLEEVES UNDER ALL ROADWAY, PARKING, AND WALKWAY SURFACES. EXTEND 5' MINIMUM BEYOND SURFACE EDGE. IDENTIFY ENDPOINTS OF SLEEVING. REPORT ALL PROPOSED CHANGES IN SYSTEM DESIGN TO THE ARCHITECT PRIOR TO INSTALLATION.
  - G. ALL IRRIGATION HEADS LOCATED ADJACENT TO ROAD SURFACES NOT PROTECTED BY A VERTICAL CONCRETE CURB SHALL BE PLACED 18" FROM THE EDGE OF THE ROAD SURFACE.
  - H. IRRIGATION CONTRACTOR TO INSTALL MANUAL DRAIN VALVES AT ALL LOW POINTS ON THE MAINLINE.
  - I. USE ADJUSTABLE SPRAY NOZZLES WHERE NECESSARY TO ADJUST SPRAY ARC.
  - J. WHERE APPLICABLE, CONTRACTOR IS RESPONSIBLE TO PROVIDE 120 VOLT POWER AND ALL REQUIRED CIRCUITS FROM THE ELECTRICAL PANEL TO THE IRRIGATION CONTROLLER. SIZE WIRE AND CONDUIT AS REQUIRED.
  - K. CONTRACTOR IS RESPONSIBLE TO VERIFY ALL QUANTITIES PROVIDED ON ALL PLANS. IF QUANTITIES LISTED DO NOT CORRELATE WITH WHAT IS SHOWN ON THE PLAN, THE QUANTITIES SHOWN ON THE PLAN SHALL GOVERN. THIS INCLUDES BUT IS NOT LIMITED TO TREE, SHRUB, ROCK, TOPSOIL, MULCH, SEED OR SOIL, EROSION, AND DRIP LINE QUANTITIES.

- ### SHEET NOTES:
1. EXISTING POINT OF CONNECTION INCLUDING BACKFLOW PREVENTER. LOCATION IS APPROXIMATE. FIELD VERIFY ACTUAL LOCATION. RETAIN AND PROTECT EXISTING BACKFLOW AND POINT OF CONNECTION COMPONENTS. PROVIDE AND INSTALL NEW POINT OF CONNECTION COMPONENTS NECESSARY FOR IRRIGATION WATER SOURCE.
  2. RECONFIGURE EXISTING IRRIGATION SYSTEM TO PROVIDE FULL WATER COVERAGE TO EXISTING AND REPAIRED LANDSCAPE AREAS. PROVIDE HEADS, VALVES, LATERAL AND MAINLINE PIPING, CONTROL WIRES, AND ALL IRRIGATION COMPONENTS REQUIRED FOR A COMPLETE AND WORKING IRRIGATION ZONE THAT PROVIDES FULL WATER COVERAGE.
  3. PROVIDE SLEEVING FOR IRRIGATION DRIPLINE PIPING TO ALL PAVED PLANTERS.
  4. ROUTE IRRIGATION LATERAL PIPING AROUND ARCHWAY SIGNAGE BASE.
  5. NEW PEDESTAL MOUNT IRRIGATION CONTROLLER. INSTALL NEW CONTROLLER AND PEDESTAL. IN THE EVENT THE EXISTING SITE CONTROLLERS AND WIRING ARE NOT AVAILABLE TO CONTROL NEW VALVES. PROVIDE 120V POWER TO NEW CONTROLLER. MAINLINE, LATERAL PIPING, AND VALVES SHOWN IN SW AREA FOR GRAPHIC CLARITY. LOCATE IN ADJACENT LANDSCAPE AREA.
  - 6.

**1 IRRIGATION PLAN**  
 SCALE: 1" = 20'  
 0 10 20 40 60 80  
 SCALE IN FEET

**427 Shoshone St N Twin Falls, ID**

**Theron W. Ward Judicial Building  
 Remodel & Expansion**

**CSHOA**

AGENCY REVIEW SET

PROJECT	DATE
21403.000	03-31-23
DRAWN	CHECKED
KDH	KDH
REVISED	

SHEET TITLE  
**IRRIGATION PLAN**

SHEET

**L20**  
 ORIGINAL SHEET SIZE  
 36" x 48"



STATE OF IDAHO  
 PROFESSIONAL ENGINEER  
 LICENSE NO. 12254  
 MECHANICAL ENGINEERING

427 Shoshone St N Twin Falls, ID  
 BOISE, ID 83702  
 (208) 343-4635  
 info@www.cshoa.com

ATL B. HENNING ARCHITECT  
 200 BROAD STREET  
 TWIN FALLS, ID 83701  
 PHONE: 208-343-4635 • FAX: 208-343-1608  
 www.atlhennig.com

**THERON W. WARD JUDICIAL BUILDING  
 REMODEL & EXPANSION**  
**CSHOA**

AGENCY  
 REVIEW SET

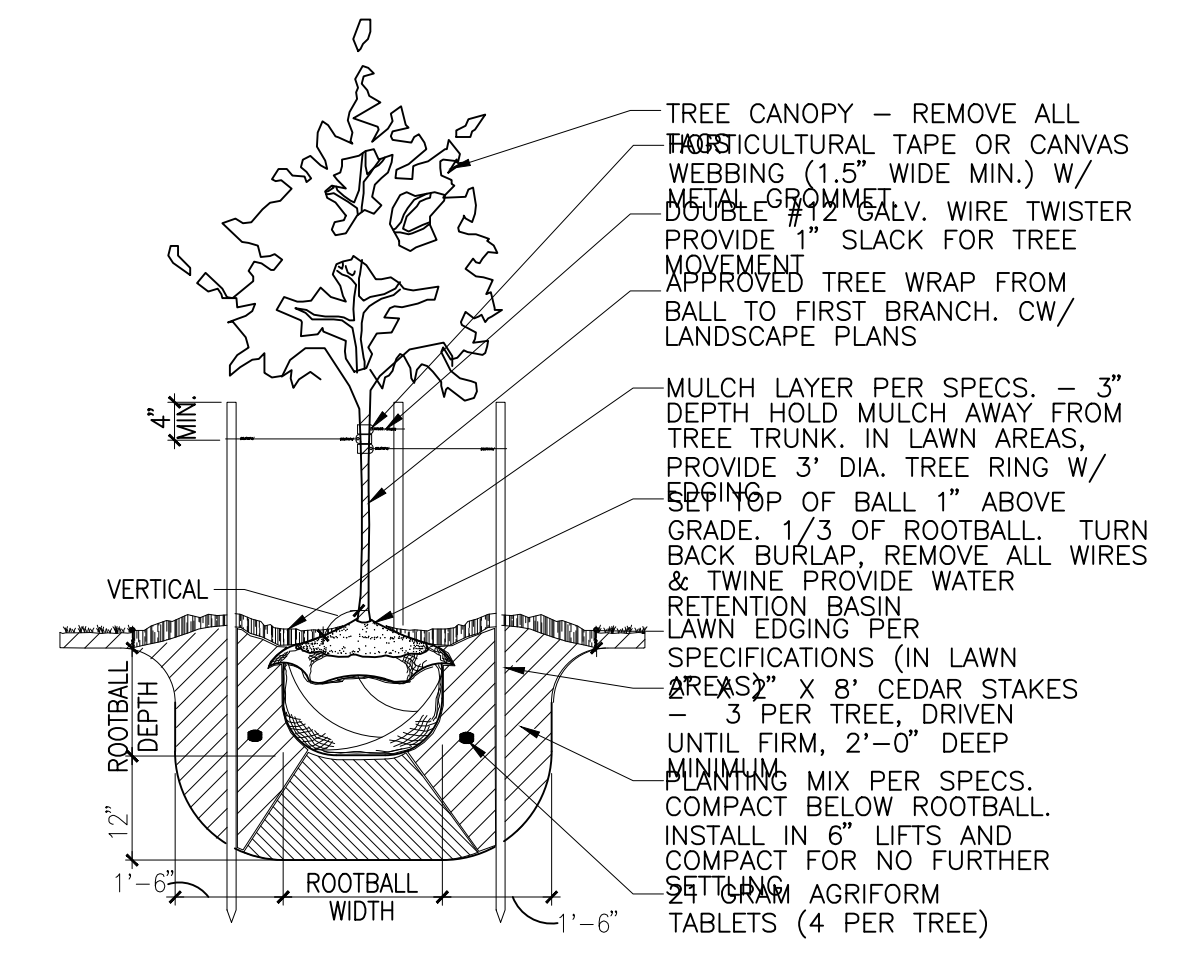
PROJECT	DATE
21403.000	03-31-23
DRAWN	CHECKED
KDH	KDH

REVISED

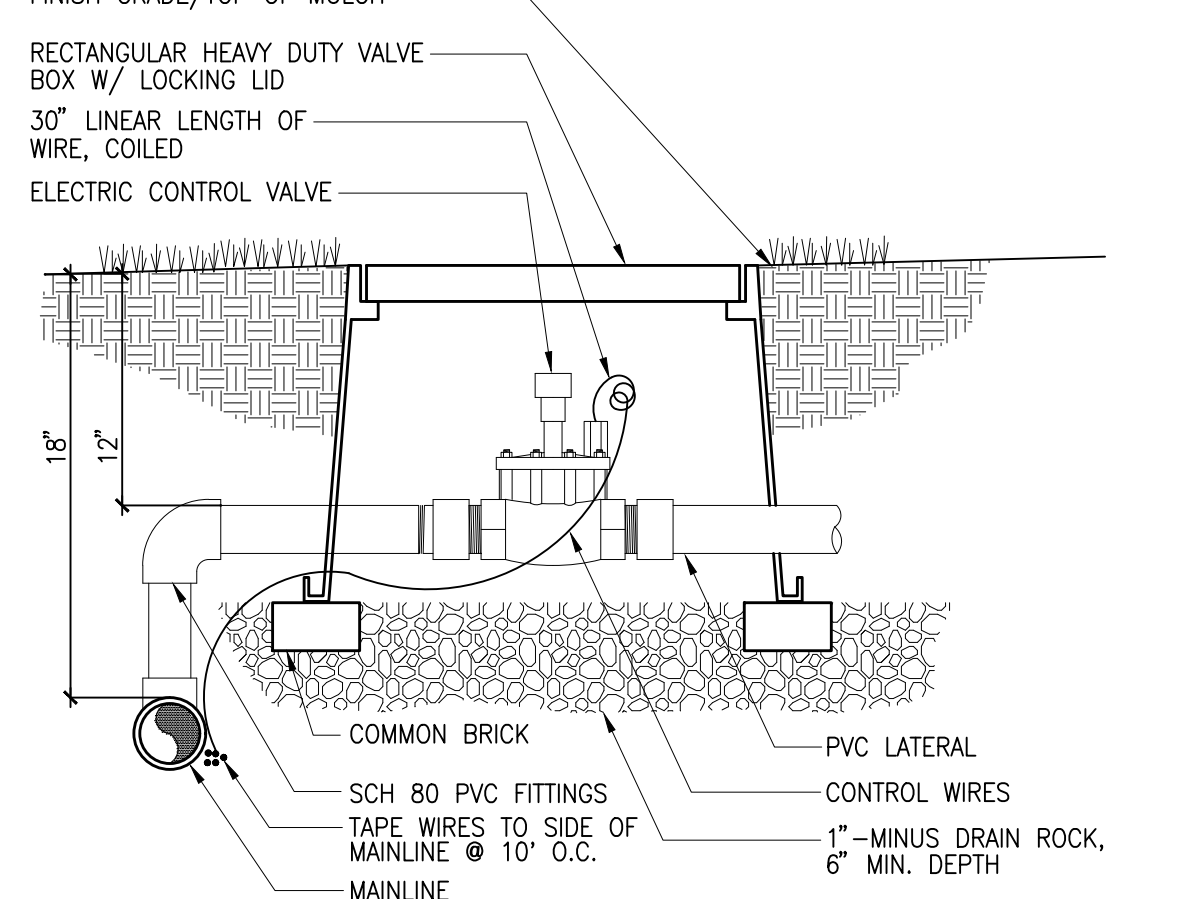
SHEET TITLE  
**LANDSCAPE  
 DETAILS**

SHEET

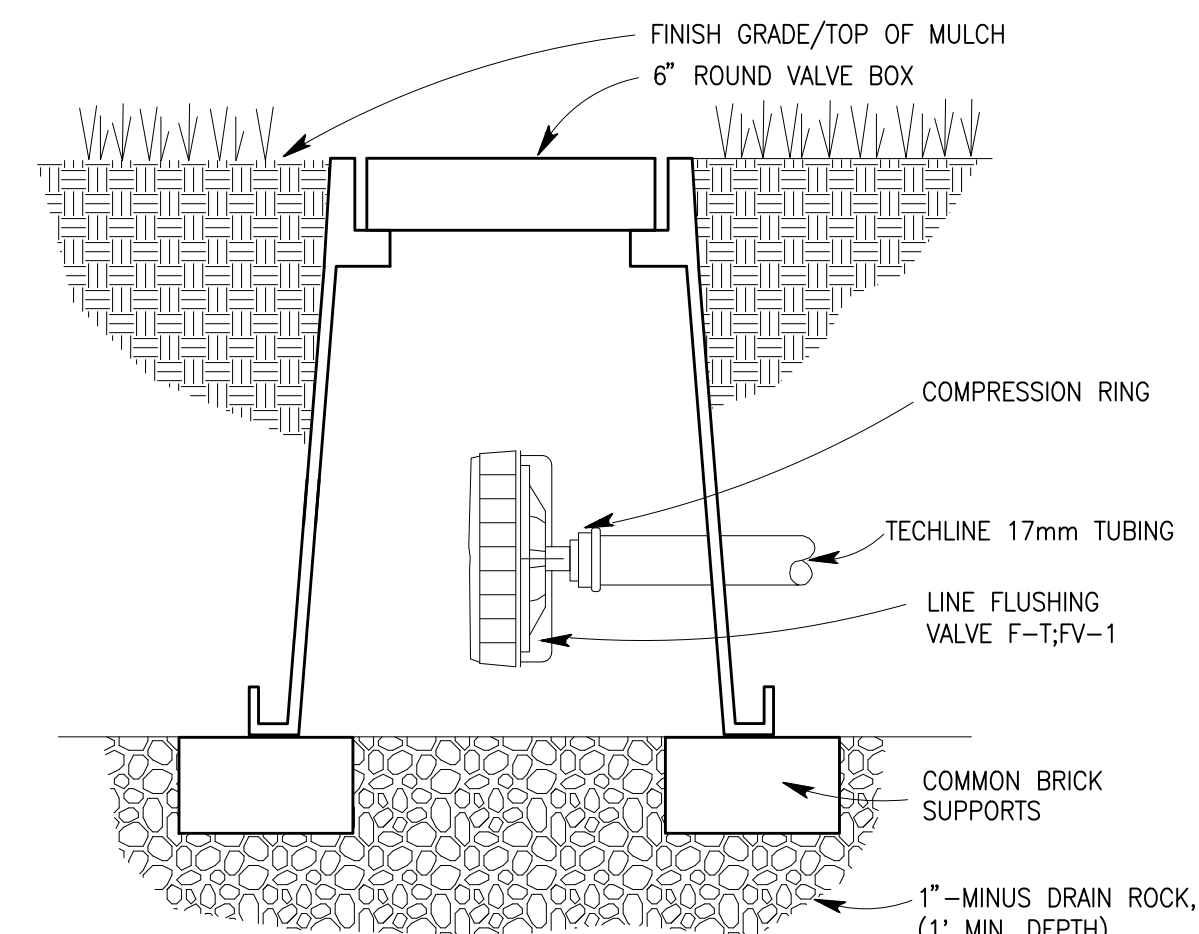
**L30**  
 ORIGINAL SHEET SIZE  
 36" x 48"



**1 DECIDUOUS TREE PLANTING**  
 SCALE: NOT TO SCALE

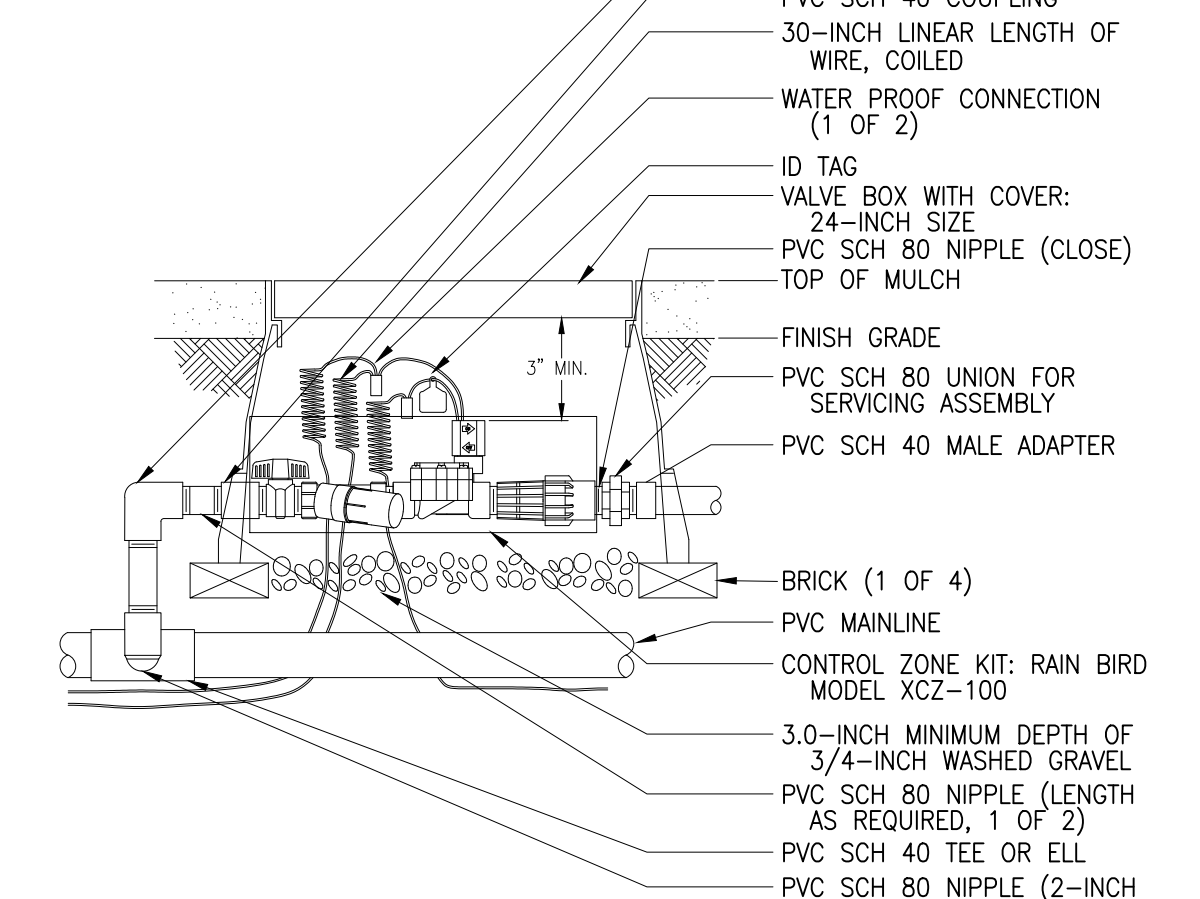


**6 AUTOMATIC VALVE**  
 SCALE: NOT TO SCALE

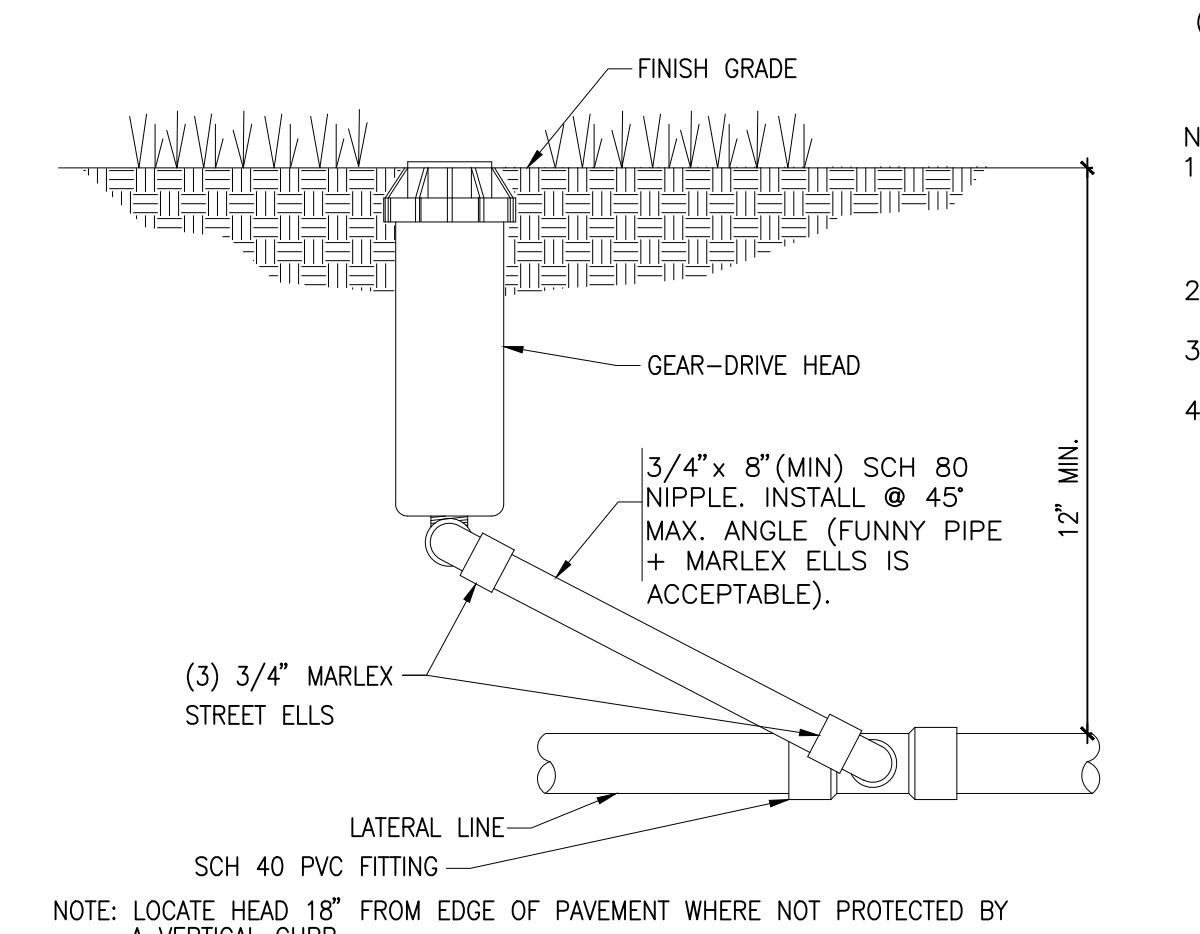


**10 LINE FLUSHING VALVE**  
 SCALE: NO SCALE

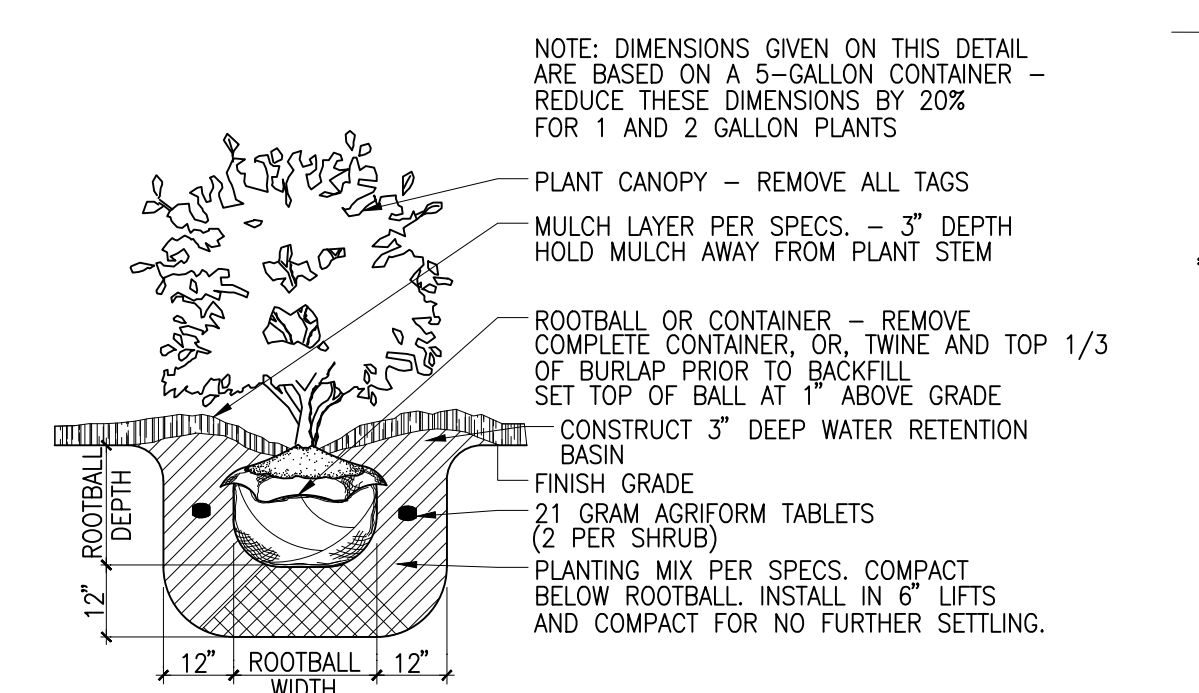
**2 NOT USED**  
 N.T.S.



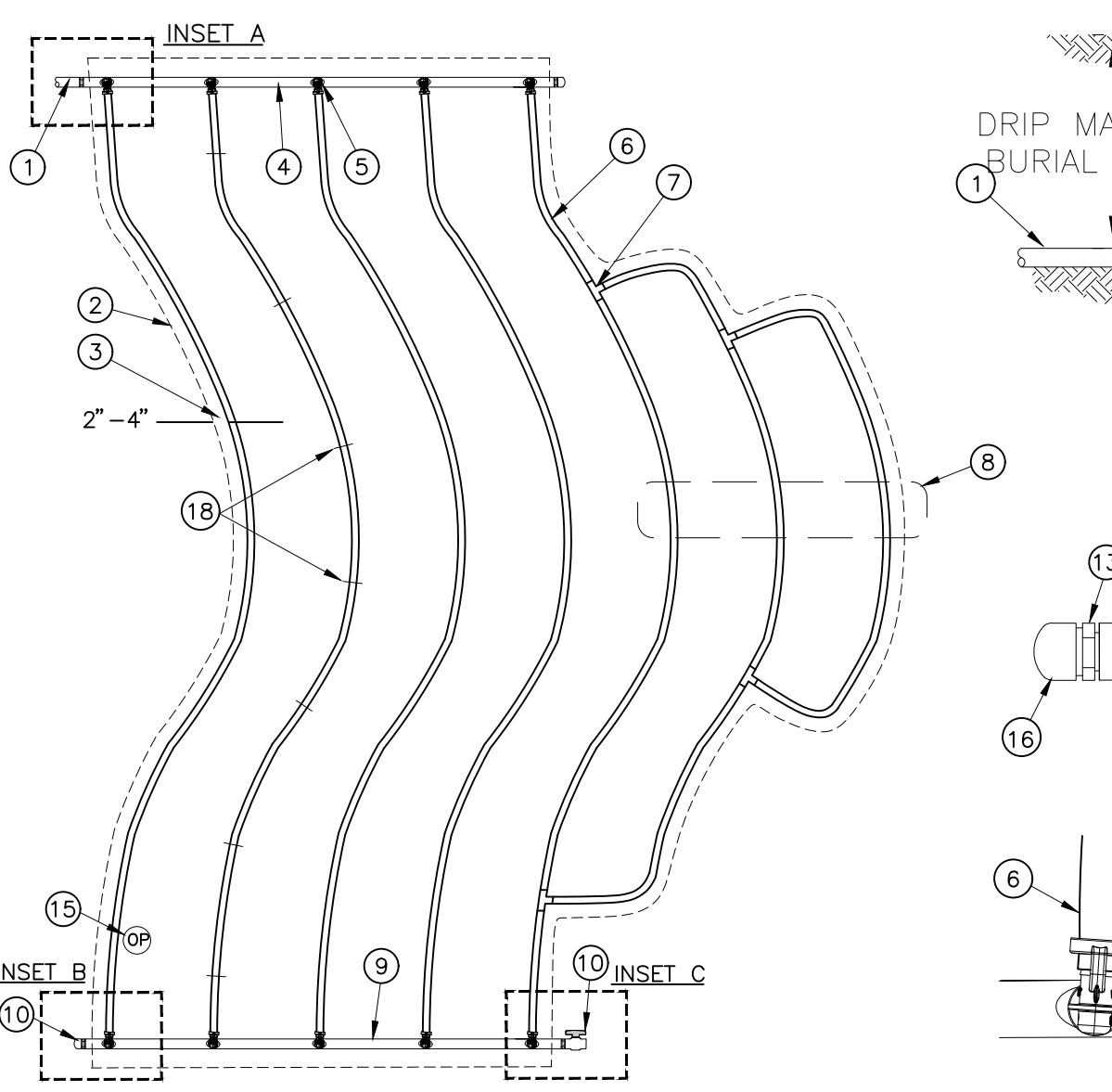
**7 CONTROL ZONE KIT**  
 SCALE: NOT TO SCALE



**11 POP-UP GEAR-DRIVE HEAD**  
 NOT TO SCALE

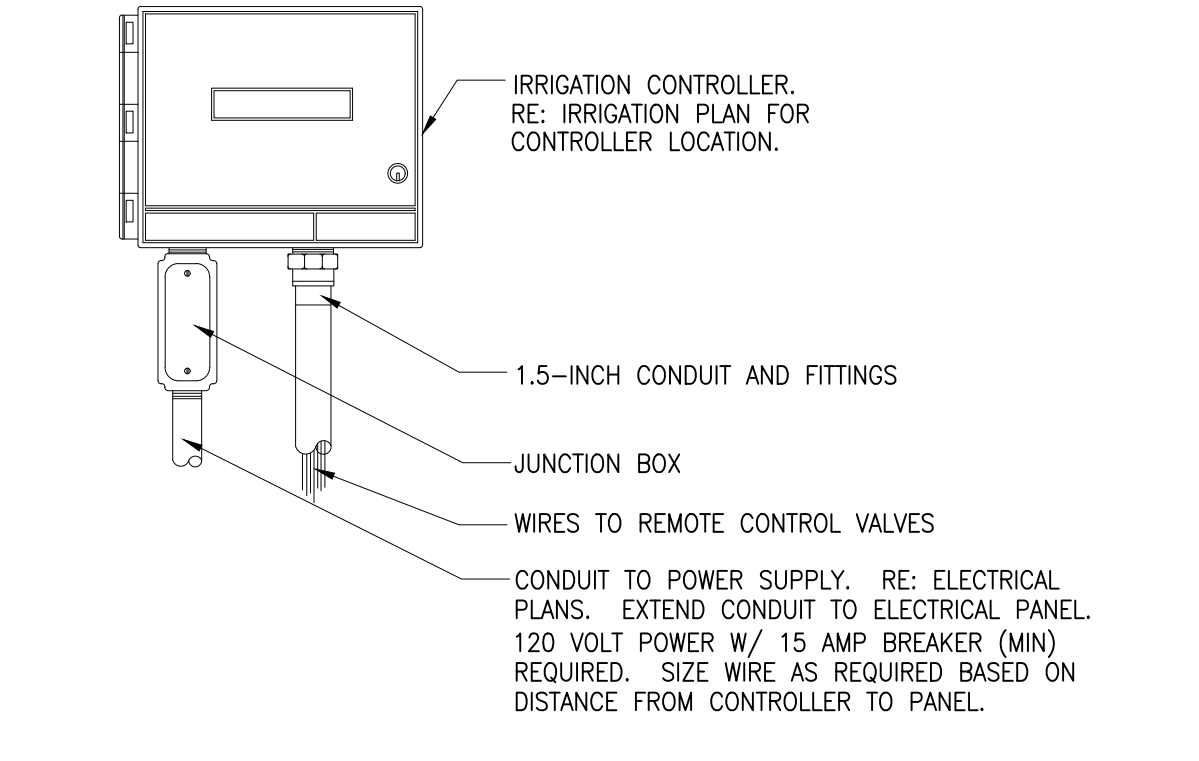


**3 SHRUB PLANTING**  
 SCALE: NOT TO SCALE

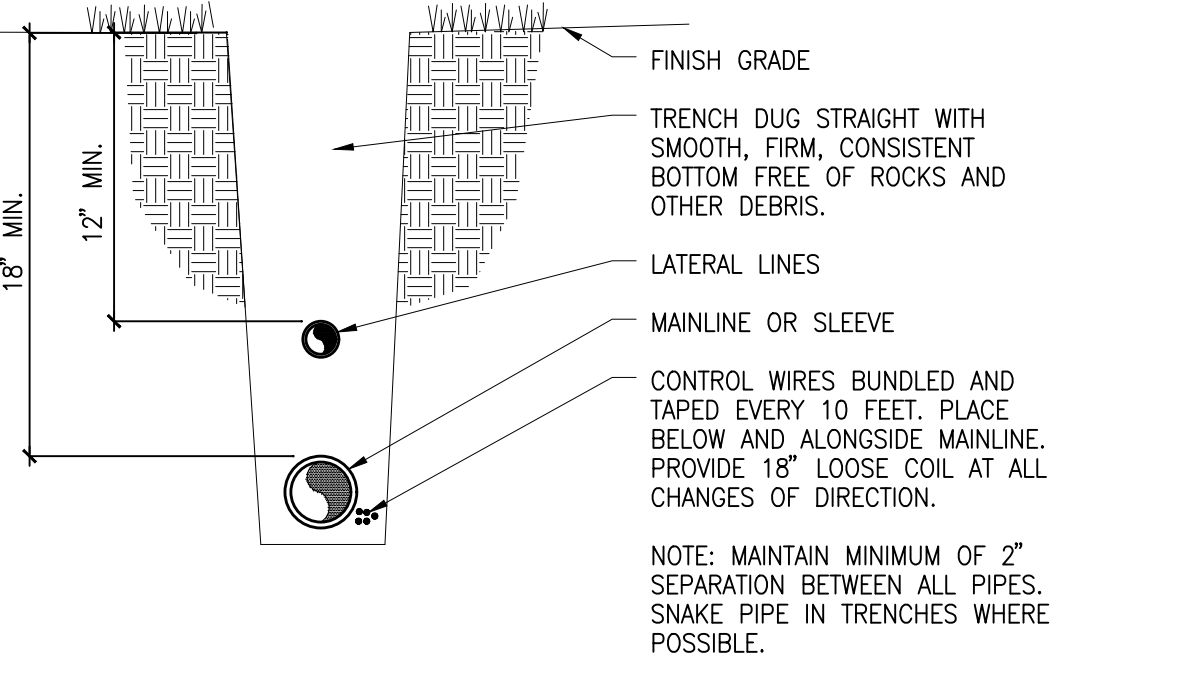


- NOTES:
- DISTANCE BETWEEN LATERAL ROWS AND EMITTER SPACING TO BE BASED ON SOIL TYPE, PLANT MATERIALS AND CHANGES IN ELEVATION. SEE INSTALLATION SPECIFICATIONS ON RAIN BIRD WEB SITE (WWW.RAINBIRD.COM) FOR SUGGESTED SPACING.
  - LENGTH OF LONGEST DRIPLINE LATERAL SHOULD NOT EXCEED THE MAXIMUM SPACING SHOWN IN THE ACCOMPANYING TABLE.
  - PLACE TIE-DOWN STAKES EVERY THREE FEET IN SAND, FOUR FEET IN LOAM, AND FIVE FEET IN CLAY.
  - AT FITTINGS WHERE THERE IS A CHANGE OF DIRECTION SUCH AS TEES OR ELBOWS, USE TIE-DOWN STAKES ON EACH LEG OF THE CHANGE OF DIRECTION.

**8 XFS SUB-SURFACE DRIPLINE-CURVED EDGE**  
 NOT TO SCALE

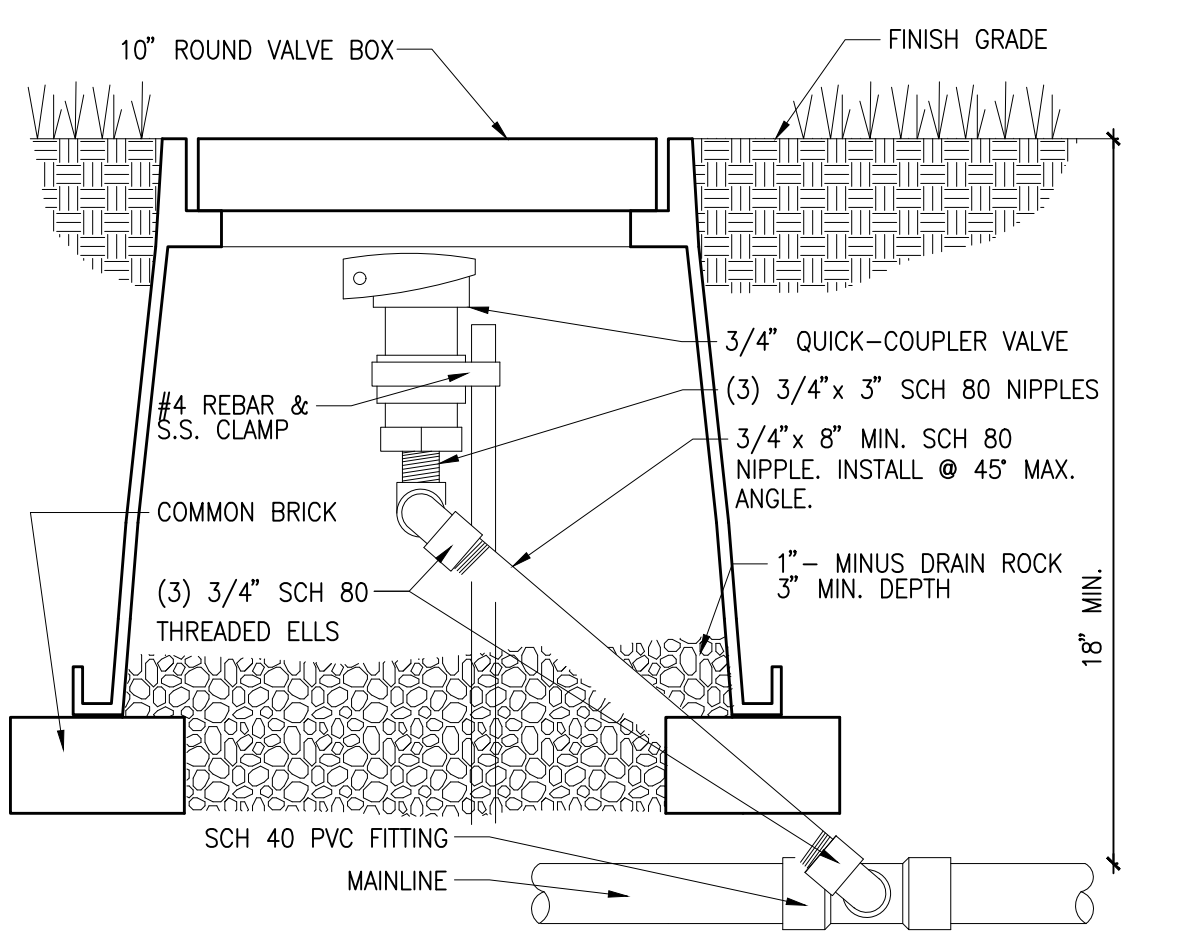


**12 CONTROLLER-WALL MOUNT**  
 SCALE NOT TO SCALE

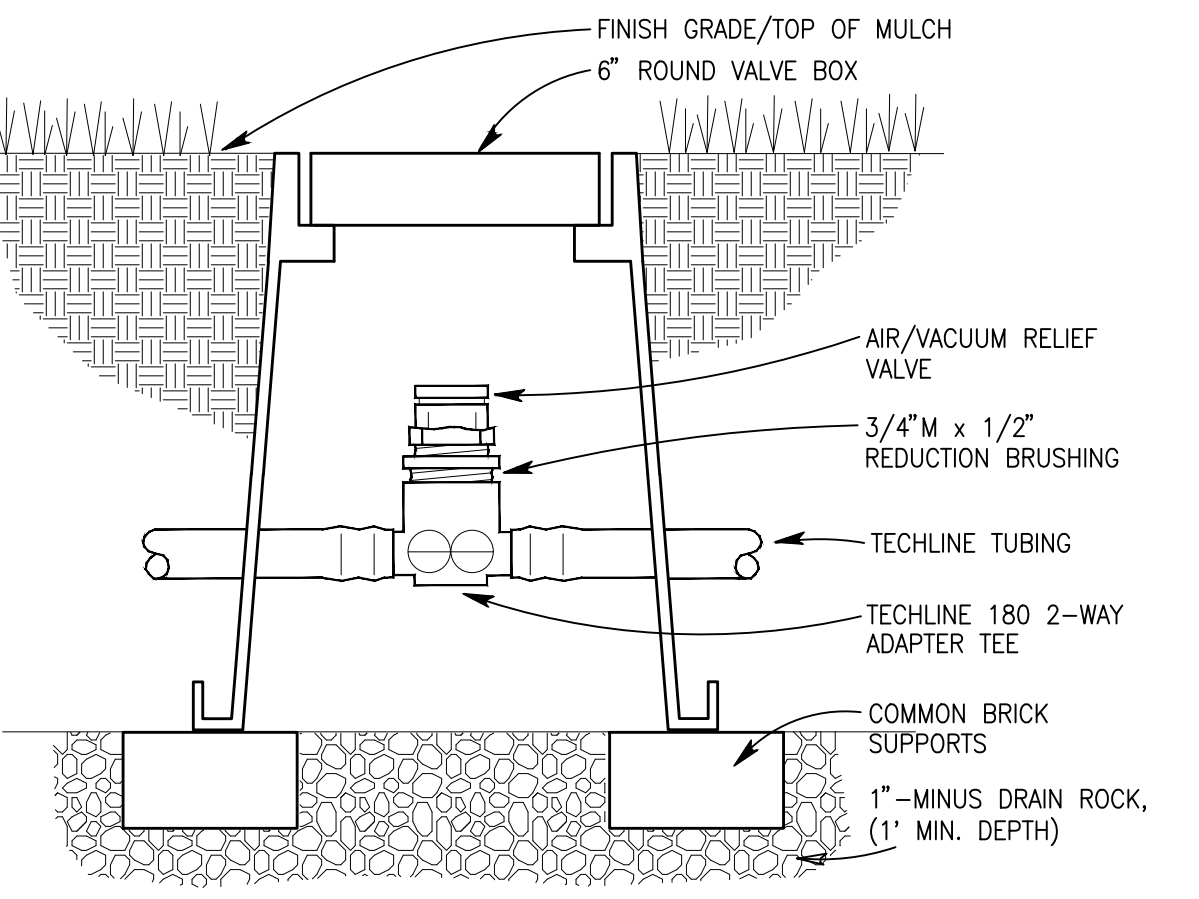


**4 TRENCH SECTION**  
 SCALE: NOT TO SCALE

- PVC SUPPLY PIPE FROM RAIN BIRD CONTROL ZONE KIT (SIZED TO MEET LATERAL FLOW DEMAND)
- PERIMETER OF AREA
- PERIMETER DRIPLINE PIPE TO BE INSTALLED 2\"/>
- OF-SUPPLY HEADER
- PRE-INSTALLED BARB FITTING
- RAIN BIRD XFS SERIES DRIPLINE (TYPICAL)
- BARB X BARB INSERT TEE: RAIN BIRD XFT-TEE (TYPICAL)
- TOTAL LENGTH OF SELECTED DRIPLINE SHOULD NOT EXCEED LENGTH SHOWN IN TABLE
- OF-FLUSH HEADER
- FLUSH POINT WITH PVC CAP OR OPTIONAL PVC BALL VALVE
- PVC RISER PIPE
- PVC SCH 40 ELL (TYPICAL)
- MALE ADAPTER INSERT
- STAINLESS STEEL, OETIKER OR MURRAY CLAMP
- OPERATION INDICATOR RAIN BIRD MODEL: OPERIND
- PVC SCH 40 CAP
- PVC SCH 40 BALL VALVE
- XF SERIES TIE-DOWN STAKES (TDS-050) REFER TO RAIN BIRD DRIPLINE DESIGN GUIDE FOR PROPER SPACING



**5 QUICK-COUPLER VALVE**  
 SCALE: NOT TO SCALE



**9 AIR/VACUUM RELIEF VALVE**  
 SCALE: NOT TO SCALE